

MID RISE - LEGAL

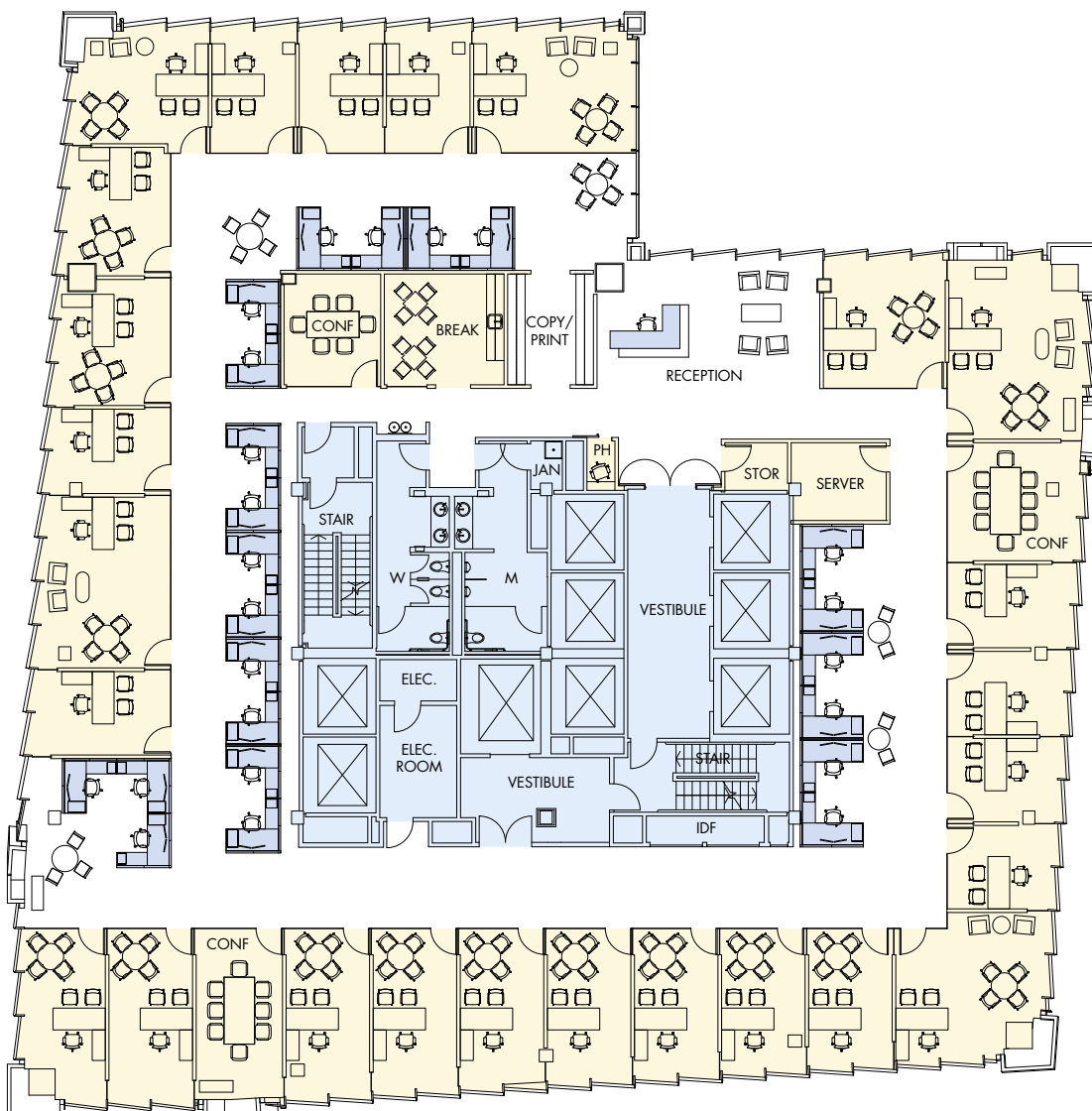


Floor 18

498 SF/Office
259 SF/Person

12,905 SF office area

- 24 open workstations
- 26 private offices
- 2 medium conference (16 seats)
- 1 small conference (6 seats)
- 1 storage room
- 1 server room
- 1 break/lounge room
- 1 phone room
- 1 copy/print area



181OFFICES.COM

For leasing information,
please contact:



One Bush Street, Suite 400, San Francisco, CA 94104
KARL F. BALDAUF | Senior Managing Director
415.445.5117 | KBaldauf@newmarkccarey.com